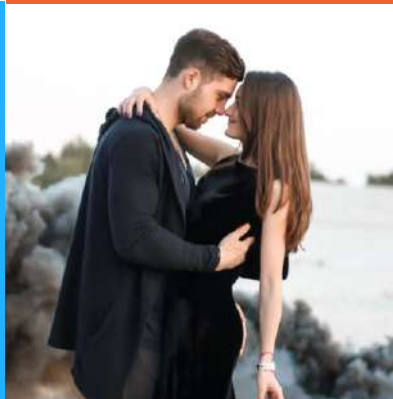
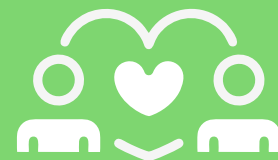


2022 English Language Test Requirements for UK Spouse Visa

By The SmartMove2UK



English language test requirements for UK Spouse visa

The 'English test requirements UK Spouse visa' is one of the most searched queries on the internet, as per our team's research.

So, our experts decided to create guidance for a UK Spouse visa and family & partner visa english language requirements.

Our experts in Mumbai, Delhi and Bengaluru have always shared the TOP 10 tips for making a successful spouse visa application. Applicants usually consider the financial requirements for a UK Spouse visa as the only critical criteria, but meeting the English-language requirement is just as crucial.

Needless to say, meeting these requirements and eligibility for the UK Spouse visa is essential, since getting the paperwork or any of the requirements wrong, can lead to a delay in the processing time for your UK Spouse visa application or refusal of the application.

Did You Know?

The English test requirements UK Spouse visa, is similar to the requirements for the UK Unmarried and Same-sex partner visa routes.

Approved English language test centres for the UK Spouse visa

A test from the following providers will be accepted if you are applying from outside the UK:

- PSI Services (UK) Ltd
- IELTS SELT Consortium
- LanguageCert
- Pearson



Summary about the 4 approved English language test centres for the UK Spouse visa

PSI Services (UK) Ltd

The UK Visas and Immigration (UKVI) describe PSI as a Secure English Language Test for UK English language tests, as they are a requirement of English language proficiency for UK visa applications.

You can book the test online whenever you like, although it has to be delivered in a single session. The test is totally computer-based and does not require an examiner or assessor.

The English Language Test (IELTS)

IELTS stands for International English Test System is recognised by more than 11,000 organisations worldwide, including government and professional bodies, educational institutions, and workplaces.

The English Language Test (IELTS) evaluates your performance across four areas of the English language: speaking, listening, and reading in academic, higher education, or practical, everyday contexts.

You can take a variety of tests, such as the IELTS Academic, General Training, and Life Skills (A1, A2, or B1) tests. Why you're going to the UK (the visa category you are applying for) will determine the kind of test you need to take.



LanguageCert

For all types of visas needed to live, work, or study in the UK, LanguageCert provides SELT tests that have been authorised by the UK Home Office and are linked to the Common European Framework of Reference (CEFR) for UK Visas & Immigration (UKVI) globally.

Pearson

Pearson English Tests provides secure English language tests for visa applications for work and immigration in the UK, Australia, and other countries for study applications anywhere else.

They offer completely computer-based English tests, and practice tests and involve a machine-scoring system.



When popular test centres like IELTS are busy, **you can get your test from Pearson or LanguageCert;** to make sure you don't have to wait for a slot!

[Click here to find your nearest approved English language test centre within the UK](#)

[Click here to find your nearest approved English language test centre outside the UK](#)



Documents you will need to provide to prove you can meet the English Test Requirements for UK Spouse Visa

- Have passed an approved English language test at an approved testing centre and received certification within 2 years of making your application.
- According to the secure English language testing arrangements, the list of approved English language exams has been evaluated as meeting Home Office requirements.
- The only tests and test levels approved are those that are listed by the UK Home Office. You must take one of the exams on the list if you plan to utilise an English language test to support your application for immigration or nationality.
- Make sure the test is dated within 2 years of making the UK Spouse visa application.

Is English language requirements compulsory for partners?

Our experts based in Mumbai, Delhi and Bengaluru have been asked by clients 'Is English language requirements compulsory?'

Yes, it is! Not providing one increases the chances of refusal of your UK Spouse visa application. However, candidates are excluded from the English language requirement in some cases. We'll get to that



Which visa routes need to provide proof of English language proficiency?

According to the UK immigration rules, proof of English language proficiency is mandatory for qualifying for many long-term and short-term business, student and family visa routes, like:

Work & Study routes:

- Innovator visa
- Start-up visa
- Skilled Worker visa
- Representative of an Overseas Business
- Sportsperson
- Student visas
- Minister of Religion

Family & Settlement routes:

- Partner
- Parent
- Settlement (also known as indefinite leave to remain)
- Citizenship



Who doesn't need to provide proof of English language proficiency

Even though it is mandatory, there are some cases where you can qualify for an English language requirement exemption.

Candidates are excluded from the English language requirement if:

- They are over 65
- They are unable to fulfil the criteria because of a physical or mental impairment
- They are nationals of countries that have most English-speaking citizens

Candidates are excluded from the English language requirement if they are nationals from the following countries:

- Antigua and Barbuda
- Australia
- The Bahamas
- Barbados
- Belize
- Canada
- Dominica
- Grenada
- Guyana
- Jamaica
- Malta
- New Zealand
- St Kitts and Nevis
- St Lucia
- St Vincent and the Grenadines
- Trinidad and Tobago
- USA



What alternative means are there to fulfil the English language requirement for the spouse visa?

If you hold a degree or other academic qualification that was earned while studying or conducting research in English, you can demonstrate your command of the language.

Only your degree certificate is required if your education was obtained from a UK university or college.

If the certificate is from a university outside the UK:

- You must present a certificate from Ecctis (previously UK NARIC) to prove that your degree is equivalent to a UK bachelor's degree or higher
- and that it was taught in English

There are two categories of certificates:

- a visa and nationality statement,
- and a statement of comparability

How The SmartMove2UK can help?

Our team at The SmartMove2UK understands the challenges of meeting complicated family & partner visa english language requirements and criteria, and we are here to assist you!

Our UK Spouse visa experts have assisted many partners looking to join their partner in the UK, in understanding the English test requirements UK Spouse visa and other aspects of the route and have a 99% success rate.

Contact our experts in Mumbai, Delhi and Bengaluru if you need expert assistance in understanding or making your UK Spouse visa application.

905, B-Wing,
Sagar Tech Plaza,
Near Saki Naka Junction,
Andheri (E)
Mumbai 400072

4th floor, 410,
Statesman House,
Barakhamba Road,
Connaught Place,
Delhi-110001

Level 9 Raheja
Towers,
26-27 Mahatma
Gandhi Road,
Bangalore-560001